



GETTING STARTED WITH YOUR GATEWAY



We are thrilled to present this gateway to all of your healthcare needs! The Edison Gateway offer you 24/7 access and insight into your health plan and all it has to offer. Through this single access point, you can view your benefits and accumulations, review your claims and EOB's, view your ID card or request a new one, find providers in your network, and there is even Cost Estimator Tool to help you make the best financial choices for you and your family. Need a hand finding your way around? Use the Live Chat to speak with our Service Team reps, who are ready and happy to help! Now, let's get you set up.

HOW TO GET STARTED

1. Go to <https://gateway.edisonehs.com/> in your web browser (Google Chrome or Internet Explorer)
2. Click the highlighted blue text on the upper right side of the screen that reads **"Click here to register and/or enroll"**
3. Select **"Member"** from the drop down menu and complete all the requested information, then click **"SUBMIT"**
4. You will then receive a confirmation email; open and click on the **"Confirmation Link"**
5. Once the words **"Login was successful"** show in your browser, your personal information should begin to load in your dashboard and your personalized member portal will take shape

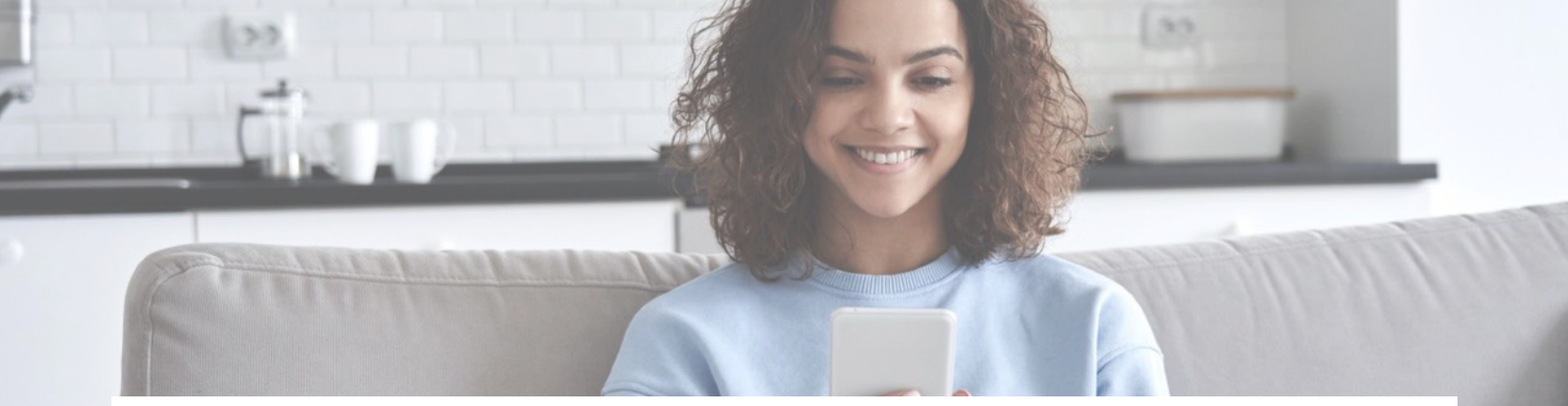
PLEASE NOTE: You may not be able to register for your EHS Gateway Member Portal until your plan year begins (for example, 1/1/22)

NEED HELP?

- If you do not see the registration confirmation email, please check your junk / spam folder.
- If the site fails to open, please check that you are using Google Chrome or Internet Explorer, and that they're updated to the latest version.

IF YOU NEED HELP OR HAVE QUESTIONS - WE ARE HERE FOR YOU

MEMBERS@EDISONEHS.COM • 888.473.3476



GETTING STARTED WITH YOUR MOBILE APP



We are also thrilled to offer a more portable option in the EdisonGateway Mobile App. This pocket sized tool gives you the same 24/7 access to all of your healthcare information that you're getting on the desktop Gateway in the palm of your hand. Benefits, health claims, ID card, and more are conveniently accessible anytime, anywhere!

HOW TO GET STARTED

1. Open the App Store (on iOs or Android) on your mobile device, and search for **"EdisonGateway"**
2. Download the app to your device
3. On the Welcome Screen, you'll have two options:
 - a. If you've already registered for EHS Gateway, use the same login info for this EdisonGateway App, or
 - b. If you have not yet registered, please click on the blue text **"Register for Gateway"**, complete all requested information, then click **"SUBMIT"**
4. You will then receive a confirmation email; open and click the **"Confirmation Link"** to complete registration
5. That should trigger the EHS Mobile app screen to read **"Login was successful"** and your personal information will begin to load in your app's dashboard

PLEASE NOTE: You may not be able to register for your EHS Gateway Member Portal until your plan year begins (for example, 1/1/22)

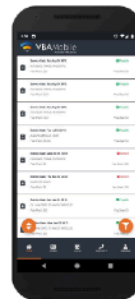
NEED HELP?

- If you do not see the registration confirmation email, please check your junk / spam folder.
- If the website fails to open, please check that you are using either Google Chrome or Windows Internet Explorer, and that they are updated to the latest version.



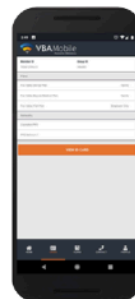
The App's home screen summarizes a member's latest activity and allows quick navigation to additional details.

- **Real-Time Communication**
- **ID Card and Plan Details**
- **Most Recent Claims**
- **Benefits Used & Remaining**



Access details to member claim information across all covered plans in a single, easy-to-navigate claims list.

- **Service Details by Claim**
- **Sort and Filter Options**
- **Claim Type & Status Indicators**
- **Service Provider Details**



View plan details and network participation, as well as additional eligibility information to support ID card needs.

- **Eligibility Information**
- **Plan Participation**
- **Available Network**
- **Download ID Card**

IF YOU NEED HELP OR HAVE QUESTIONS - WE ARE HERE FOR YOU

MEMBERS@EDISONEHS.COM • 888.473.3476